

# MRM- North Western Sewer Connection project

## Williamson Road site- TBM shaft construction

Melbourne Water is building a new sewer to connect the Maribyrnong River Main (MRM) to the North Western Sewer in Maidstone. Residents and businesses in Melbourne's west will benefit from this transformational new sewer, which transports wastewater to the Western Treatment Plant in Werribee. The new sewer will meet the needs of a growing population and increase capacity for future sewage flows, while ensuring local amenity, environment, heritage and community interests are protected during the delivery of the project.

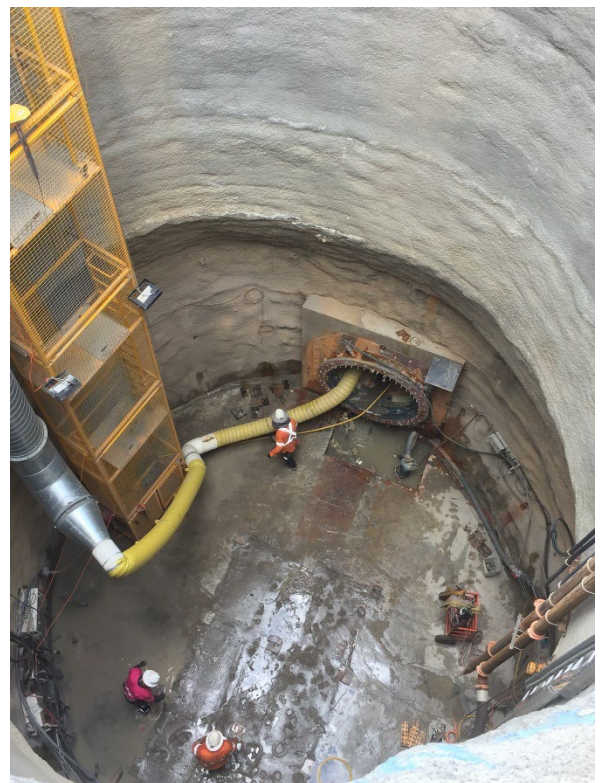
### What we are doing

Major construction works are due to commence at the Williamson Road site. Excavation of the tunnel boring machine (TBM) launch shaft will be in this location. The launch shaft will be an eight-metre-wide by 40-metre-deep hole when complete. To excavate the hole, we will be drilling into the hard rock layers and using large excavators, craned in and out of the shaft, to remove the rock and dirt as we go down to depth.

In order to reduce the impact on the community we have selected to use a drill and blast method over heavy rock breaking in the shaft. What this means is small amounts of explosives will be used to break the rock once every three days.

### What to expect

- Increased truck movements in and out of the site. Additional access gates are on Hampstead Road and Williamson Road. See map for more detail
- The timber wall around the perimeter of the site will assist with minimising noise associated with shaft excavation works
- Audible safety warnings when blastings occur (under 5 seconds duration)



## Safety

For the safety of pedestrians and motorists all traffic will be stopped on Hampstead Road when blasting occurs. This is anticipated to be a two minute disruption. Traffic controllers will be onsite to advise and assist at these times.

## Working Hours

Standard working hours will be Monday to Friday, 7am to 6pm and Saturdays 7am to 1pm. Quiet works will continue onsite outside of these hours.

Once the shaft is complete and tunnelling starts, the tunnel boring machine will operate 24-hours a day, Monday to Saturday. The tunnelling works are expected to start in late-2022, and we will provide further notification prior to this date.

## Location of works



## Contact us

You can contact our project team during working hours on 1800 712 434.

Please advise if you would like to subscribe to text alerts for this project and follow our Your Say page for further information:

[yoursay.melbournewater.com.au/MRM-NWS-Connection](https://yoursay.melbournewater.com.au/MRM-NWS-Connection)