

Greening the Pipeline Zone 9 (Brooklyn)

STAKEHOLDER ENGAGEMENT REPORT

September 2021

alluvium



Alluvium recognises and acknowledges the unique relationship and deep connection to Country shared by Aboriginal and Torres Strait Islander people, as First Peoples and Traditional Owners of Australia. We pay our respects to their Cultures, Country and Elders past and present.

Artwork by Vicki Golding. This piece was commissioned by Alluvium and has told our story of water across Country, from catchment to coast, with people from all cultures learning, understanding, sharing stories, walking to and talking at the meeting places as one nation.

This stakeholder engagement report has been prepared by Alluvium Consulting Australia Pty Ltd for Melbourne Water under the contract titled 'Greening the Pipeline Zone 9 (Brooklyn)'.

Citation: Alluvium, 2021, STAKEHOLDER ENGAGEMENT REPORT, report prepared by Alluvium Consulting Australia for Melbourne Water, location

Cover image: abstract river image, Shutterstock

Contents

1	Introduction.....	1
1.1	<i>Project Location</i>	<i>1</i>
1.2	<i>Project Objectives</i>	<i>2</i>
1.3	<i>Scope of this report</i>	<i>2</i>
2	Community Engagement Methodology	3
3	Community Engagement Results & Analysis	5
3.1	<i>Demographics.....</i>	<i>6</i>
3.2	<i>Summary Analytics</i>	<i>7</i>
3.3	<i>Community Feedback Themes</i>	<i>8</i>
3.4	<i>Community workshop outcomes</i>	<i>10</i>
3.5	<i>Summary of specific results.....</i>	<i>12</i>
4	Summary and conclusions	14
	Appendix 1: Detailed Comments on YourSay Survey.....	15

1 Introduction

Alluvium and Realm Studios have been engaged by Melbourne Water to develop a landscape and Integrated Water Management (IWM) Masterplan for 'Zone 9' of the Greening the Pipeline initiative. Greening the Pipeline covers the 27 km (approx.) length of the heritage listed Main Outfall Sewer (MOS) pipeline reserve. The MOS alignment commences in Brooklyn before traversing the western suburbs of Melbourne to the Werribee or Western Treatment Plant. Zone 9 covers the first 2.8 km of the MOS alignment, from Millers Road in Brooklyn to Little Boundary Road, Laverton North, just west of Kororoit Creek. The project area is on the traditional lands of the Bunurong people of the Kulin Nations.

The Masterplan for Zone 9 will combine landscape and water initiatives that improve the function, aesthetic and utility of the corridor while meeting the objectives of the broader Greening the Pipeline initiative. Generally, the combination of landscape and water will be critical to creating a green, cool environment that has greater resilience to local conditions such as heat and wind. The enhanced landscape will benefit the local community by creating an improved space for those who use the space for recreational activities and those who commute through this section using Federation Trail. It will benefit the environment by introducing greater tree cover, vegetation and habitat, while reducing the volume of stormwater reaching Kororoit Creek.

1.1 Project Location

Figure 1 shows the extent of Zone 9 from Millers Road, Brooklyn in the east to Little Boundary Road in the west. Other notable features of the area include:

- Kororoit Creek (lower) toward the western boundary of Zone 9
- A recently constructed Melbourne Water sediment basin adjacent to the MOS and to the east of Kororoit Creek
- Geelong Road that creates a significant physical barrier to those walking along Zone 9 or commuting using the Federation trail, and
- DN Duane Reserve, a local football ground and recreational space west of Millers Road.

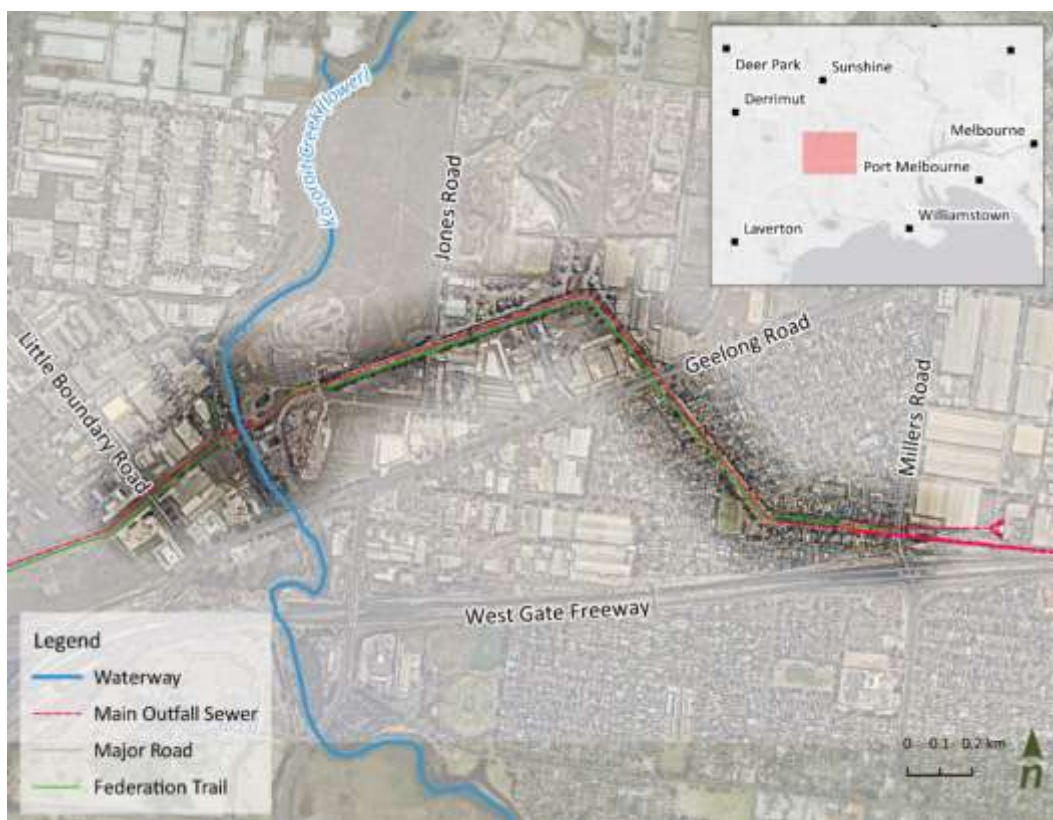


Figure 1 *Greening the Pipeline Zone 9 – Location map*

1.2 Project Objectives

The objectives for the Zone 9 Masterplan align with those of the broader Greening the Pipeline initiative, including to:

- Manage Water Sensitively
- Enhance active transport and green links
- Improve health and wellbeing
- Celebrate our heritage
- Create vibrant open spaces
- Activate community sense of place.

The objectives of the IWM elements of the Masterplan respond most directly to the “Manage Water Sensitively” objective by ensuring the site harnesses stormwater resources as a non-potable source for irrigation and infiltration into the soil profile. Objectives related to this include “Enhancing active transport and green links” and “Create vibrant open spaces” through enhance vegetation cover supported by irrigation and infiltration.

By engaging agency stakeholders and community members we are also seeking to align the Masterplan with the objectives to: “Activate community sense of place”. This is relevant as Zone 9 is adjacent to residential areas. Houses back onto the corridor and there is a public sportsground and playgrounds that encourage local people to engage with the space. To the north of Geelong Road there are greater challenges to creating a “sense of place”. Industrial land, waste management, unsealed roads and informal car parks all contribute to a diminished sense of place. There is however the consistent spine of the Federation Trail bike path that brings with it a sense of place for bicycle commuters and users of the corridor.

The Kororoit Creek and Melbourne Water sediment basin provides significant opportunity to counter this and to activate Zone 9 for a range of users.

1.3 Scope of this report

This Stakeholder Engagement Report summarises

- the engagement activities undertaken as part of developing the Masterplan
- the ‘results’ of the engagement activities including data and analytics that provides further context to the feedback received
- the themes that evolved from that feedback that can then be incorporated into the Masterplan.

2 Community Engagement Methodology

The community engagement approach was to gather information from the community and local businesses about how they currently use the area and what ideas they have for future improvements. The methodology for Greening the Pipeline Zone 9 (Brooklyn) consisted of the following:

- A high-level profile analysis of the community using 2016 ABS census data
- A five week community engagement period from 29th June to 8th August 2021
- A Melbourne Water online YourSay page was created that allowed the community and local business to input ideas on a Social Map (Figure 2) and to answer survey questions
- Two letter drops to the community and local businesses (see Figure 2 showing the map of the letter drop area): the first letter drop was to inform them of the engagement period and the opportunity to visit the YourSay page, and the second letter drop was to inform them of an online community session
- Signage was installed across the project area along the Federation Trail
- An online community session via Zoom; and
- A presentation at Brimbank City Council's Brooklyn Industrial Precinct Committee to inform local businesses of the project and the opportunity to provide input.



Figure 2 YourSay Social Map indicating the number of location of comments posted online

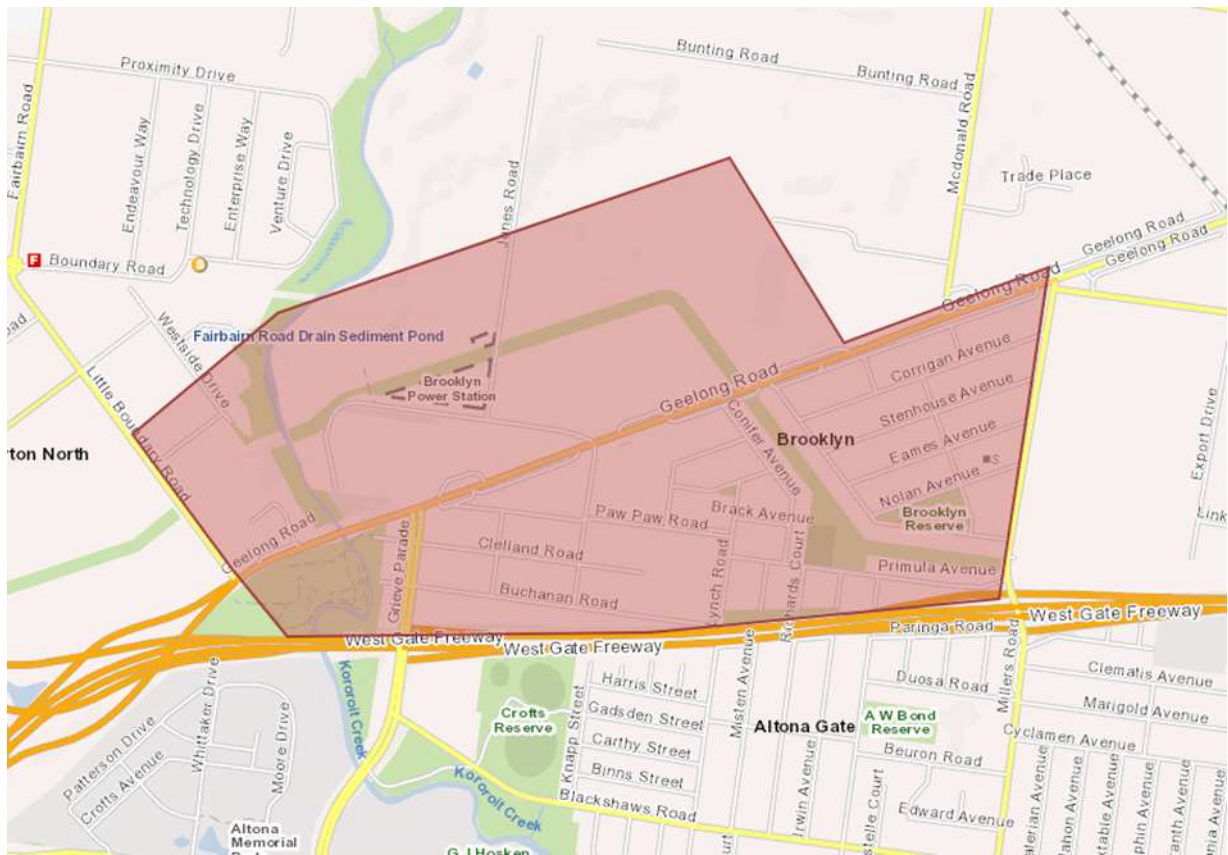


Figure 3 Letter drop area map

3 Community Engagement Results & Analysis

The “YourSay” results and online engagement sessions provided insights into the community value placed on the Greening the Pipeline initiative and the Zone 9 project area. Further, the results highlighted their preferences for the development of the area into the future. The engagement results from Melbourne Water’s YourSay page and online community information session have been captured, collated and presented below.

Figure 4 below summarised the details of the community members who responded to the Your Say page and their responses across usage, awareness and safety.

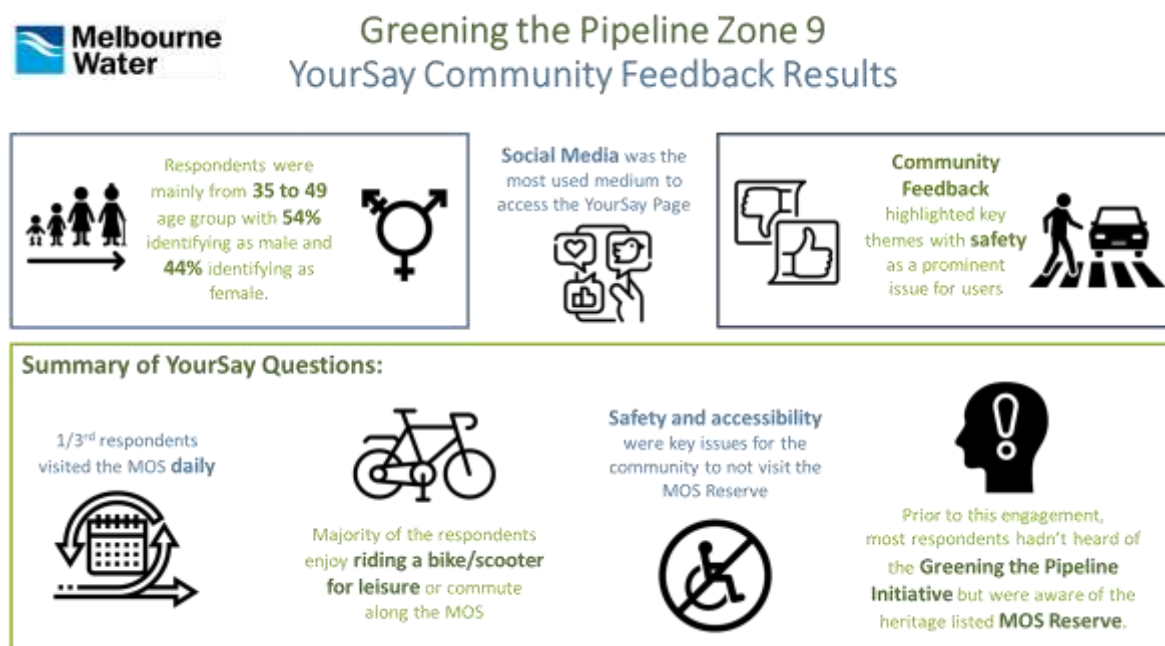


Figure 4 Community response summary

In terms of written responses, the word cloud shown in Figure 5 below highlights common community thoughts.



Figure 5 Community response word cloud highlighting key themes

Further detail from the Your Say page results are set out below.

3.1 Demographics

Approximately 80 comments were received via the YourSay page. Six community members attended the online community sessions held on the 6th of August (via Zoom). Figure 6 below shows the broad age range of responders, indicating that the open space is valued by all age ranges. Over a quarter were within the 35 to 49 age group range highlighting the importance of active open spaces to adults and potentially parents within Brooklyn.

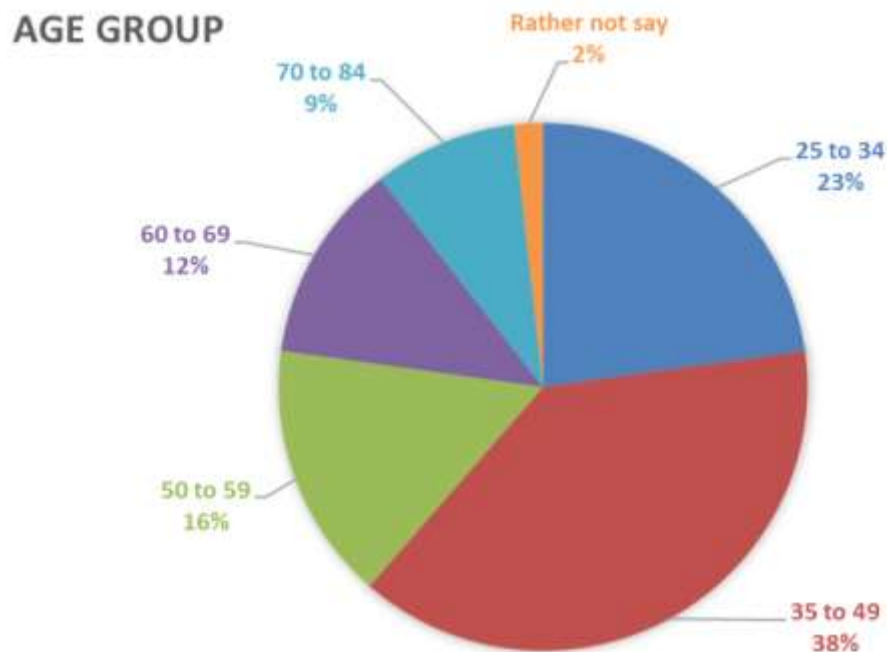


Figure 6 YourSay age group demographics

In terms of gender both male and female respondents were well represented, with a slightly greater number of males responding (Figure 7).

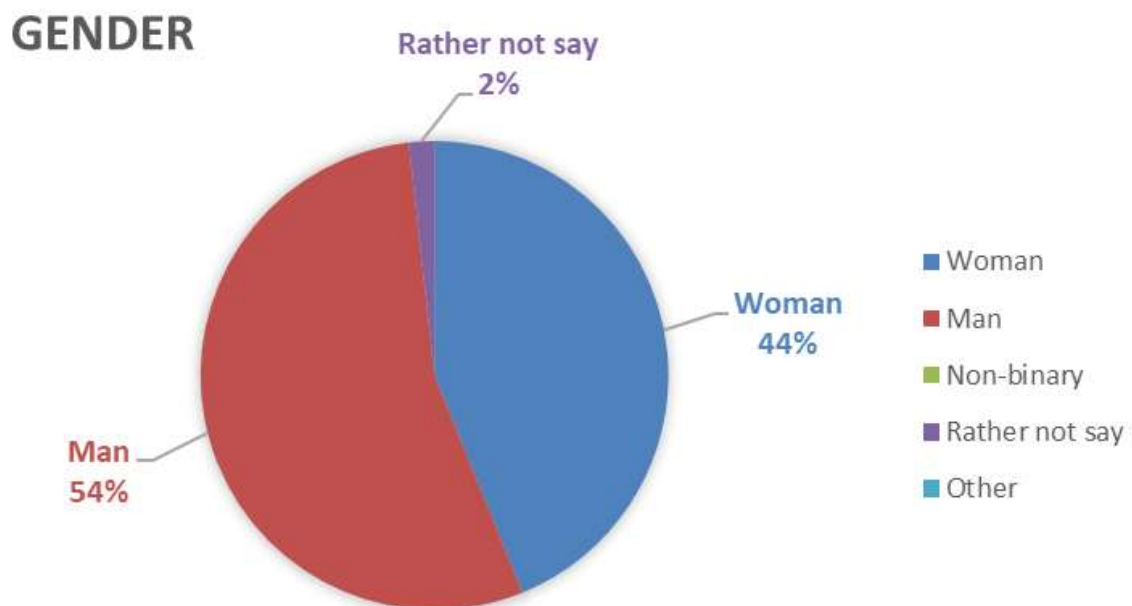


Figure 7 YourSay gender demographics

3.2 Summary Analytics

The YourSay platform received over 1,170 views and 137 individual comments referred to as ‘contributions’ in the below performance summary in Table 1. There were 24 people who ‘subscribed’ to the project using the follow button which resulted in additional contributions.

In general terms, respondents were supportive of the intervention, seeing an opportunity to improve a well-used space and to address issues that limit the use of Zone 9, including perceptions around safety.

Table 1 Information regarding key visitation and utilisation for Greening the Pipeline’s YourSay page.

Metric	Description	Number
Visitors	The number of unique public or end-users to a Site. A Visitor is only counted once, even if they visit a Site several times in one day.	1,170
Visits	The number of end-user sessions associated with a single Visitor.	1,576
Views	The number of times a Visitor views any page on a Site.	1,784
Contributors	The unique number of Visitors who have left feedback or Contributions on a Site through the participation tools.	75
Contributions	The total number of responses or feedback collected through the participation tools.	137
Followers	The number of Visitors who have ‘subscribed’ to a project using the ‘Follow’ button.	24

Figure 8 below shows the acquisitions through digital media platforms. The increase in visits to the Zone 9 YourSay page may be attributable to Melbourne Water’s social media promotion and shares.

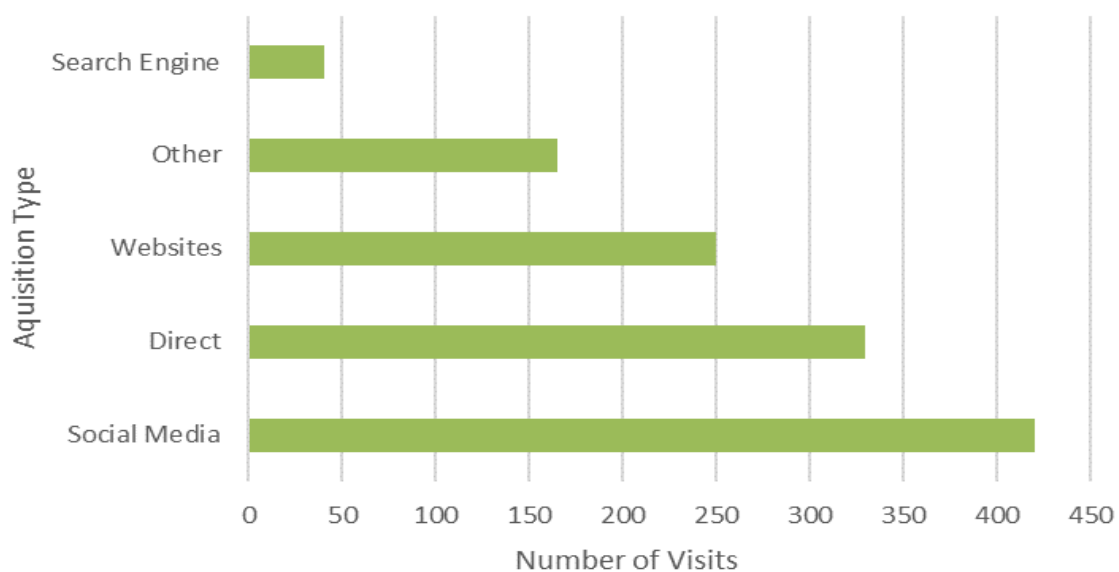


Figure 8 Information regarding the method by which Visitors arrived at the YourSay site for Greening the Pipeline

3.3 Community Feedback Themes

The YourSay comments were analysed to identify some key themes in the responses and these are summarised in Figure 9.

Safety

Safety is a prominent issue for users of the space including:

- Safely negotiating larger roadways like Millers Road and Geelong Road (which is a particular concern given the width of the road and nature of traffic, including larger trucks)
- The surface of the Federation Trail
- Lighting
- Separation of cyclists and other users (e.g. directional markings)

Recreation

The recreation theme highlighted the community's desire to introduce a range of potential uses in the space:

- Pump / bike track
- Public seating and benches
- Exercise facilities (logically placed near DN Duane Reserve).

Planting and environment

The planting and environment themes highlighted:

- The issue of odour from nearby land uses
- The potential to use the MOS as a stormwater storage
- The need to retain and add vegetation that provides shade, greening and attracts birdlife
- Planting that buffers noise and litter from adjacent land uses.

The access and education themes highlighted the preference for wayfinding signage, cultural and European storytelling and potentially artworks. The potential of introducing viewing opportunities near the waterway was also raised. These themes were reinforced during the community workshop sessions, with those outcomes summarised in section below.

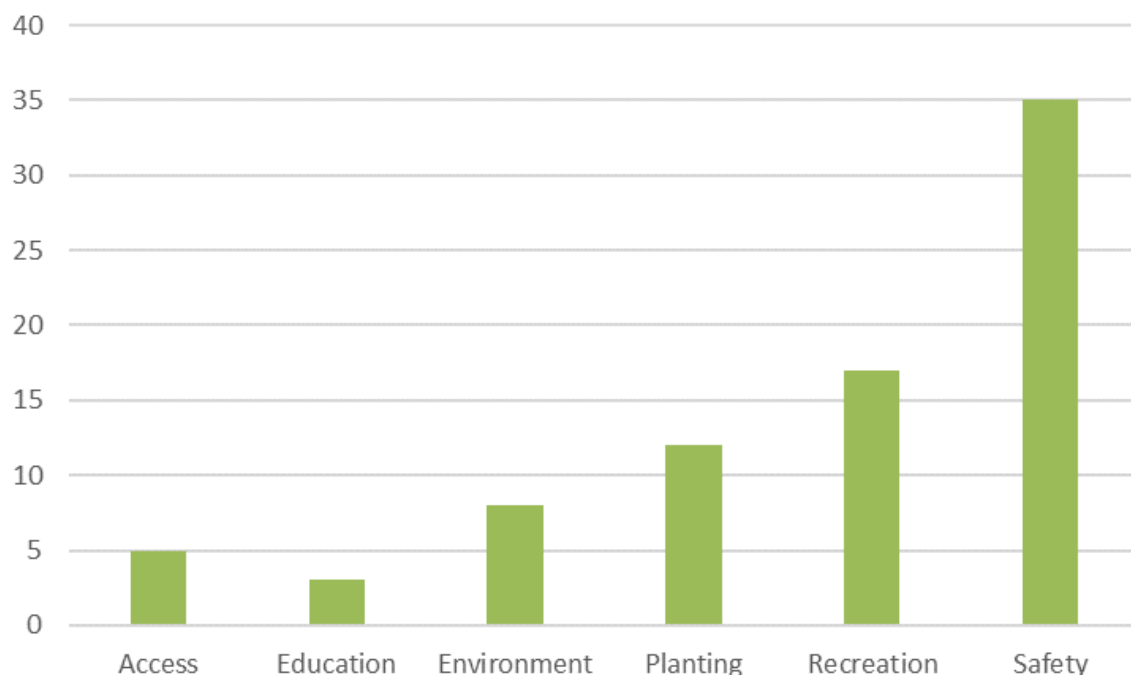


Figure 9 YourSay responses summary of themes

Based on the overall themes, the YourSay Survey asked the community some key questions on the MOS area to understand their perspectives and concerns. Table 2 summaries responses on the survey questions. For detailed comments on each question, please refer to Appendix 1.

Table 2 *Summary of community responses to the YourSay survey*

Survey Questions	Comments
What aspects of Brooklyn make the area unique and could be included in the Masterplan?	<p>The industrial heritage of Brooklyn</p> <p>Improving the existing habitat corridor</p> <p>Existing green links connecting natural areas</p> <p>Restoration of the Kororoit Creek aqueduct (bridge) including red brickworks and</p> <p>A dog loving community.</p>
Thinking specifically about the Kororoit Creek section of the reserve, what would make you visit this section more often?	<p>A key concern was safety, in particular, safer intersections through the main roads, lightning, separate facilities for walkers and cyclists. Improvement of the overall aesthetic would also encourage communities to visit the MOS Reserve often.</p>
Suggest any features you have seen at another park or reserve that you would like to see included in the Masterplan?	<p>Increase greening along the Federation Trail</p> <p>(Solar) lighting, signage, access to drinking water and toilets</p> <p>More benches along the trail</p>
How did you hear about MOS?	<p>Communities' awareness towards the MOS was mainly due to the Friends of Kororoit Creek group, signage on the Federation bike trail, Facebook, and information shared by the local community.</p>
What is your residential postcode?	<p>3029, 3025, 3015, 3012, 3016, 3023, 3011, 3018, 3807</p>
Any Other Comments?	<p>Additionally, some respondents suggested they would like to use the children's park near the reserve along with activities such as graffiti viewing, pipe crawling and drone flying.</p> <p>Whereas some of the people have expressed concerns over safety and accessibility along the federation trail.</p>

3.4 Community workshop outcomes

On the 6th of August an online community session was held to directly engage with local residents to understand their aspirations for Zone 9. We were also joined by Fiona McKinnon from Hobsons Bay Council. The event was run over two sessions, between 4:30 and 7:30 pm.

After a brief introduction to the objectives, scope and physical boundaries of the project area, attendees were asked to provide their reflections on how they used the area, existing issues and opportunities for improvement. This feedback was gathered using an online platform called Mural, where comments could be directly placed on a plan of the project area. This is shown in Figure 10 below.

Pleasingly, the feedback received from community groups aligned well with the feedback received from agency stakeholders and the Your Say page. There was general agreement across the community representatives that attended that session that these were important themes. The discussion around road safety and access was prominent, including how Zone 9 interacts with the industrial activities undertaken adjacent to the project area, and the associated vehicle traffic (i.e. often large vehicles with restricted visibility).

The outcomes from the session are summarised within Table 3 below with specific commentary provided under each theme.

Table 3 *Community engagement session – Feedback summary*

Theme	Comment summary
Safety	Safety risk at major road crossings and intersections with industrial activities, like the Cleanaway site Condition and level of trail pavement Cycling barriers (at Little Boundary Road and Cleanaway) make passing difficult for cyclists
Lighting	Like to see public lighting from Duane Reserve through to Brooklyn Reserve Brooklyn Community Hall refurbishment means cycling and walking is encouraged and lighting is critical to that General lighting along the route generally
Access and use	Sediment basin and surrounds is a good location for a rest stop Separation of users: Cyclists and runners on one path with a separate path for families / toddlers etc particularly between Millers and Little Boundary Paving is currently of poor quality Need for toilets at some point An alternative pathway beneath the 1 in 100 year elevation but closer to the waterway for walkers
Vegetation (greening and cooling)	A site specific urban forest solution designed for Brooklyn conditions More than lower storey plantings required Vegetation to play a role in improving air quality and amenity
Education	Take opportunities to tell European and Indigenous stories including artwork Educate the community regarding what is being installed and the uses and reason for that (particularly water infrastructure)

SITE ANALYSIS - OPPORTUNITIES & CONSTRAINTS



Figure 10 *The Mural board where feedback during the online community session was collated*

3.5 Summary of specific results

The following figures provide a summary of the responses to specific questions asked in the community survey.

“How often do you visit the MOS Reserve in Brooklyn?” showing that a third of respondents visit Zone 9 daily.

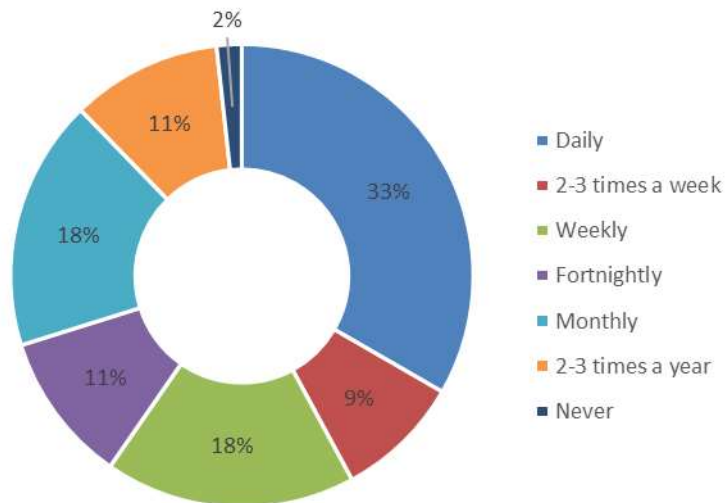


Figure 11 Community response to frequency of visitation to the MOS Reserve

“What types of activities do you like to do along the reserve?” with the most popular responses being riding a bike / scooter for leisure and commuting.

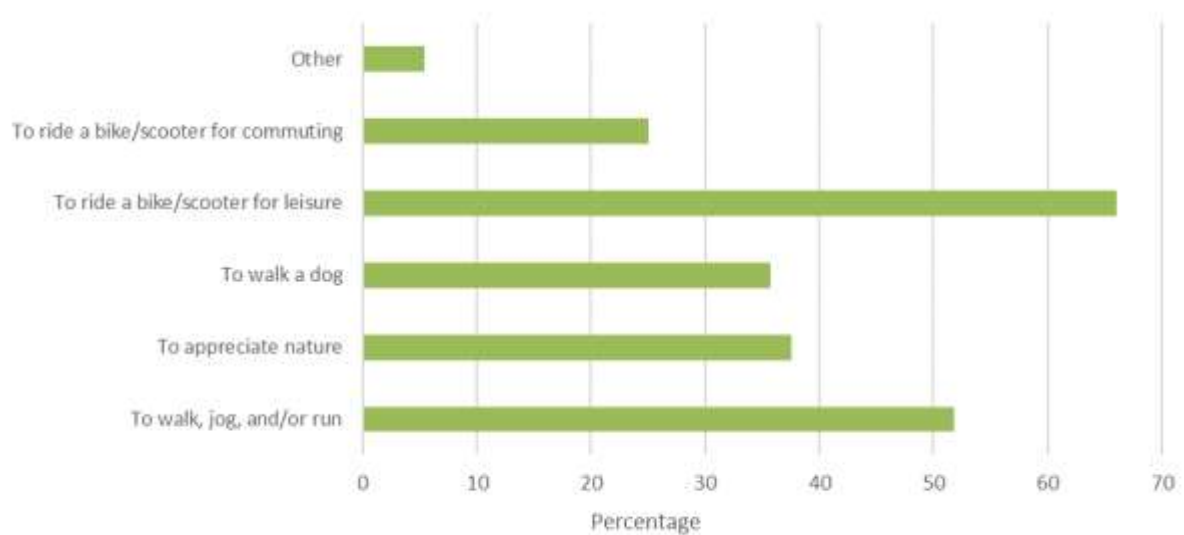


Figure 12 Community response to types of activities

“What is the reason why you have not visited the reserve?”. The responses mainly indicated that safety and accessibility were key issues.

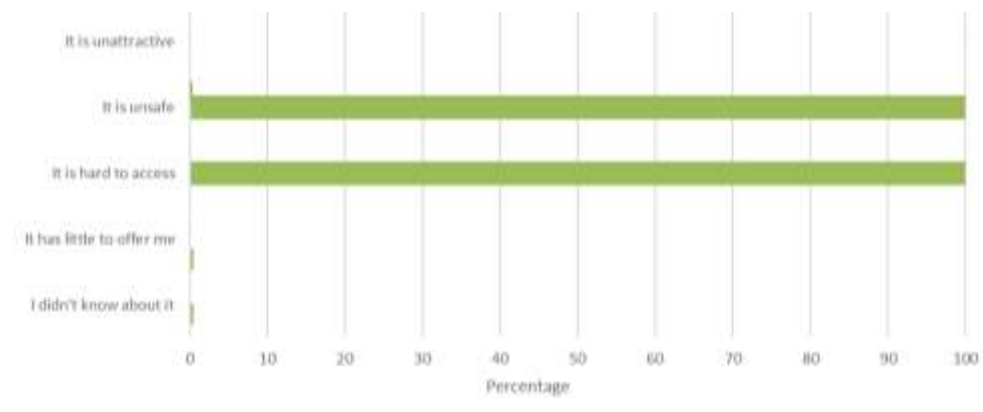


Figure 13 Community response to reasons for not visiting the MOS Reserve

“Prior to this engagement, had you heard about the Greening the Pipeline initiative?”, indicating that most had not.

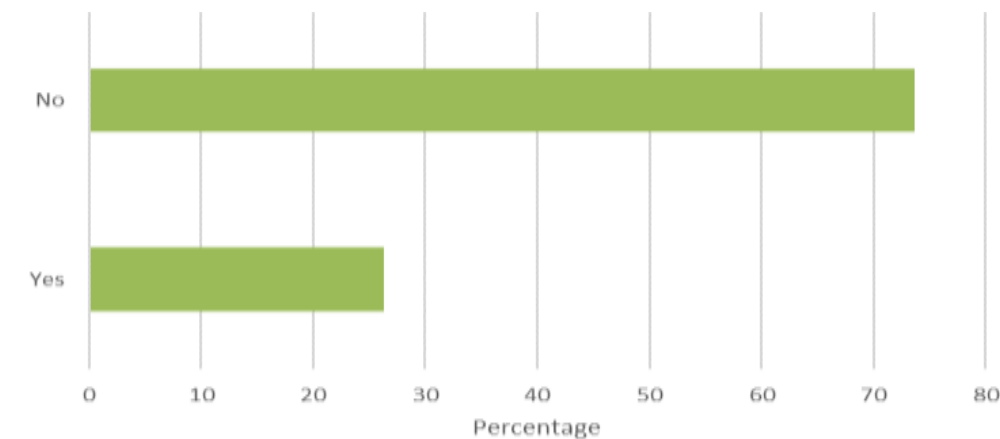


Figure 14 Community response to GTP awareness

However, to the question **“Prior to this engagement, had you heard about the heritage listed Main Outfall Sewer?”**, more than half had.

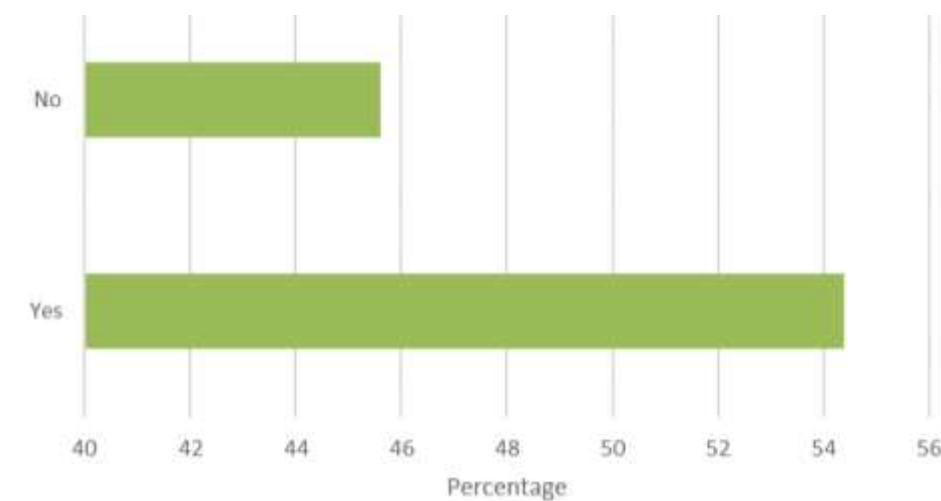


Figure 15 Community response to MOS awareness

4 Summary and conclusions

Through the Your Say page, stakeholder workshop and online community session a range of themes have emerged that will be used to develop the Zone 9 Masterplan for the Greening the Pipeline project.

Safety and access were key themes with two aspects:

- feeling safe within Zone 9 leading to requests for things like improved lighting, and
- access and use, highlighting the interaction between Zone 9 and major road crossings, such as Millers Road, Geelong Road, Jones Road and the Cleanaway site. Each of these presented safety issues for users of the Federation Trail.

The recreation theme pointed to enabling multiple recreational uses within the Zone 9 corridor, including active use like bike tracks and exercise equipment and the provision of benches and places to relax. The connection to DN Duane Reserve was also raised as an asset that can be used to create a recreation precinct.

Revegetation, planting and greening was also prominent with users keen to see a greater density of planting, of both groundcover and shade species. It was also clear that the choice of vegetation needed to respond to the site's challenges and be suitable for the Brooklyn environment. For example plants that create a barrier to wind and litter and that can counter odour and air pollution to some extent were preferred.

4.1 Next steps

The next steps for the project are to

- Use the community and stakeholder information to support the development of a draft Masterplan,
- Present the draft to agency stakeholders for comment, ensuring that key community feedback has been addressed, and
- Finalise the Masterplan and share with the community.



Appendix 1: Detailed Comments on YourSay Survey

This table provides detailed community responses from the YourSay Survey on Greening the Pipeline (Brooklyn). *Note: the comments are not in any particular order*

What aspects of Brooklyn make the area unique and could be included in the Masterplan?	Thinking specifically about the Kororoit Creek section of the reserve, what would make you visit this section more often?	Suggest any features you have seen at another park or reserve that you would like to see included in the Masterplan?	How did you hear about MOS?	What is your residential postcode?	Any Other Comments
"Preserving a natural area with remnant species and providing links between natural areas. In addition, recognising the industrial heritage and historical improvements to the public health of Melbourne"	"Liaise with adjacent businesses to improve their interfaces with the trail, particularly litter control. Weed removal, improvements to the path north & south of the Federation trail (possibly outside your scope)"	"Seating, water fountains, lighting, improved path with regular maintenance including litter control, tree planting- especially endemic species, including shrubs & grasses. Consistent path width with centre lines to remind all that it is a shared pathway."	Signs on the path	3029	" Use of the children's park right next to the federation trail in Brooklyn (it's renovations were great but it's missing a toilet!)"
"The MOS reserve is one of the last areas untouched by development and has great natural looking trees and grass."	"Definitely a loop trail to exercise on safely that connects in multiple areas to prevent doubling back or dead ends. Wide enough for young children to safely share with bikes and runners and dogs, connecting to the existing Kororoit creek trail partially completed nearby."	"Definitely a pump track like at the bottom of Quarry Park in Maribyrnong (even a mountain bike trail would be good) A Climbing wall under the bridge, seen in Maribyrnong. I would also like safer connections from residential streets. Dedicated bike lanes maybe."	At work.	3025	" It is hard and unsafe to get to the beginning of the trail as the bicycle lane on Millers Road ends before it gets to the trail head."
"Access to bike trails and facilities that are the envy of the West and other Suburbs."	"Take advantage of the aqueduct more, keep it maintained and bring back its natural beauty. Currently it is unmaintained and does not look great."	"Lighting along pathways behind residential area. Solar powered and energy efficient."	Know the history and live in the area	3015	" Graffiti viewing, pipe crawling :), drone flying "
"Brooklyn has been a neglected suburb for years suffering the ill effects of high-level pollution and desperately requires amenity improvements."	"Playgrounds, safe area to walk the dog and facilities."	"I would not suggest adding features. I would prefer for the basics to be done to a high standard such as, building a pavement that will stay in good condition and keeping landscaping maintained and free from weeds over the life of the trail."	Already aware of the history. Information panel at Millers Rd.	3012	" Kids love to walk around they call it an "adventure" "

"Both history and geography of the area could be recognised"	"This is a beautiful area and needs to be more accessible to the public. Landscape the area to be more inviting and safer to access."	"Bike maintenance/repair stations. Water stations. Undercover gazebos. Seating."	Local connections	3012
"The industrial heritage of the area and an as a gateway to Melbourne's west. Also, a link between Millers and Geelong Rd.....and as a way to walk to the 16 shops and Altona Gate in Millers Rd"	"Sometimes the noise some industries around there can be off-putting"	"Lighting along pathways behind residential area. Solar powered and energy efficient."	The sign on Federation bike trail	3012
"The red brick work is artful and deserves to be shown off."	"More plants of various types, especially trees"	"Lighting, and clear site lines for secure feeling while commuting"	Because I ride along it	3012
"Industrial heritage, particularly the bridge"	"Safer intersections (with roads and trails). A good viewing/stopping point at the intersection with the Kororoit Ck trail but away from the trails proper with heritage information signage at the viewing point."	"Better signage of where you are in relation to main roads, and to be able to notify emergency services should you need to."	Through work associated with the fed trail further down stream	3016
"Brooklyn as a gateway to Melbourne West."	"Providing facilities for cyclists and walkers such as toilets and water fountains and ultimately connecting up with the Skeleton Creek trail."	"The disused underground pipe areas should be recommissioned as an aquifer to ensure water supply to the plants along the pipeline. Currently they are being wasted."	Facebook	3016
"It is the only safe bike route through the area. The industrial heritage and current industrial scenery make this a unique ride in Melbourne (even with the smell). It allows me to ride a loop that includes the trails along the bayside."	"Lights for night-time running and walking. A path that follows the creek out toward griever parade and the Toyota plant"	"THIS IS AN SAFETY ISSUE: Fed trail/Pipeline between Millers and Geelong Rd is used by a lot of ladies and kids.....but in the winter months it can be pitch black in early morning and late afternoons ...that is before 9am or after 5pm. People feel vulnerable using the reserve at these timesit is desperately in need of Solar Lighting along this length of the Trail/Reserve!....as a community we have been trying to have this done for years!!!!"	Being a history lover and try to understand the background of the trail.	3012

<p>"Brooklyn is very industrial- the more we can make it feel like we aren't near factories and major roads would be terrific"</p>	<p>"The smelly industrial sections need to be cleaned up or improved for this to be enjoyable. I don't mind that it's a bit wild but it's still sparse and looks uncared for. Artwork, murals, sculpture, greenery!"</p>	<p>"Lights along the Federation Trail. More trees and flowers planted. Benches and extra dog bins along the trail."</p>	<p>By riding along the route already many times</p>	<p>3018</p>
<p>"Recognising the heritage of the area beyond a sewer and new industry. Our first nations people in the area, the migrants. It is a great place on the bike trail to see the city so celebrate it as the 10km ring before heading in or out of the city. Make it an example of turning a polluted suburb into a green and sustainable, liveable place"</p>	<p>"It needs to be upgraded - bike path and area opened up"</p>	<p>"Solar bollards that create lovely lighting that is not stark and ugly, Newport lakes is a stunning example of how an ugly and industrial space can be beautiful. Nooks and paths that invite people to follow them. Artwork mixed with nature; native herb gardens that can grow wild. Spots to sit and 3012contemplate"</p>	<p>Friends of Lower Koroit Creek tree planting days.</p>	<p>3013</p>
<p>"The industrial heritage is important and having a well maintained and usable green corridor is a good contrast to the surrounding land use."</p>	<p>"More attention to maintenance. Clear and well-maintained paths. More trees. Signage that explains the area. Clean it up a bit. Some lighting for dusk."</p>	<p>"A ci3013rcuit track that people can run without interruption and has a digital clock/timer. Solar lights, Paths as close to the water as possible"</p>	<p>I travel this path almost daily up near hoppers crossing</p>	<p>3020</p>
<p>"I ride the Federation trail. It's very industrial but strangely nice."</p>	<p>"Historical value of the aqueduct & being important intersection of Kororoit creek trail to north (Sunshine West) and south (Altona North)"</p>	<p>"Like this sitting area, water station, trail lights along the trail in Djerring Trail. Would like to see these facilities in the Masterplan."</p>	<p>While riding along the trail</p>	<p>3012</p>
<p>"Recognise the main outfall sewer & industrial environment."</p>	<p>"This part of the trail is at the early part of my usual ride, more trees and perhaps local art installations"</p>	<p>"Better signage. Do something with the old Bridge, it's beautiful."</p>	<p>I grew up in Yarraville / Footscray and spent part of my youth exploring the rivers and creeks in the area, when the</p>	<p>3186</p>

			Federation trail was opened it formed part of my regular social cycle	
"I like being able to ride away from the main roads and see the creek and local birds. I also like the historical markers and information posted along the way."	"Connect the Federation Trail to the Bay Trail along the Kororoit Creek. Then Connect the Fed Trail to the Skeleton Creek Trail to the Bay. To make the best use of our assets."		Through Melbourne Water	3012
"Cleaning up the locality, planting trees shrubs, and information on the history of Indigenous people in the area."	"Finishing the missing link down to Altona. Better maintenance and connectivity of bike lanes / public transport links in general."	"Bike stations such as those along the Skeleton Creek trail that provide water, pumps for tyres etc"	From the disappointment from the previous council investment for this area being a gated dog park	3013
"The industrial and indigenous history"	"If the KOROROIT trail joined properly down to Altona North. Something that incorporates the old aqueduct would be nice but really need to hide the tip and industrial facilities"	"Art along the trail; boards to acknowledge animal types in the area/conservation/bush tuck; spots to sit down to meditate or just take in nature/have a great; gym equipment somewhere!"	From discussions about sewer in Melbourne	3015
"Celebrate the history of the pipeline"	"Smooth bike path and better handling for the stop lights"	"This Trail requires a toilet stop and drinking fountains."	Marker on path	3023
"Industrial heritage is the obvious point, but with the waterways here there is likely to be some Indigenous history or archaeology that could be highlighted? And in more recent history, the stories of diverse migrants who worked /	"Less litter, light, and definitely somehow minimise the stink that comes and goes!! Biodiversity in trees and plants for lots of birds to visit. This section of the track is the closest to my home. I look forward	"I like to see the Indigenous history and use of the land alongside the colonial history so that those visiting the area can develop a deeper appreciation for a sense of place and its importance"	Cycling along the pipeline route	3015

work in Brooklyn and live nearby could also be highlighted"	to it feeling safer, cleaner and open to enjoy"			
"Despite the high concentration of Industry warehousing and traffic in the area, there is an abundance of wildlife that use the Federation trail corridor, numerous raptors, kites, kestrels, Eagles and smaller birds"	"I enjoy the historical story boards, and once again the natural habitat is juxtaposed with industry, there is a large concentration of Cunningham Skinks (Lizards) and tiger snakes in the area that need to be recognised and preserved. I've been visiting them for years, the Skinks in particular have a unique family social structure, forming extended family groups."	"Sufficient lighting at night along the trail as it's almost pitch black after sunset. New durable path without all the midline cracks, we've tripped so many times on these cracks and the repairs never stick long. More bins / at least 1 bin towards the Geelong Road section of the trail. Public electric BBQ in the undercover area of the playground next to the soccer field."	Local chatter	3220
"Close to the city and parklands in the Brooklyn area"	"Improvement to walking trail. Lighting. More bins"	"Park benches to sit and enjoy the creek if it were healthier"	Long-time resident in Brooklyn, I've always known the sewer is there	3011
"Recognising where Brooklyn came from & what makes Brooklyn, some old tannery equipment, some relics from the tip."	"Upgrade the bike path it's actually just a traffic passage for me not much to look at and unfortunately the smells and tip and truck traffic make it not suitable for cycling it's just no bike friendly like Altona foreshore"	"Lights. More bins. Improvement to walking tracks. Fed Trail could also use plant life/vegetation."	Explored it. googled the history.	3018
"Open spaces and quiet atmosphere."	"As long as it doesn't impact residential houses with noise and gathering of people. Would like to see a recreational park."	"Better lighting on federation trail between millers Rd and Geelong Road, and management of odours past Geelong Road in industrial area"	local community	3025
"The Brooklyn area is a really family friendly area, the area is home to and is visited by family's regularly, I feel this is the most important part of our neighbourhood and needs to be expanded"	"As a woman who would like to visit this bridge, I find it terrifying & like something from a horror movie. If the grass was taken care of - less likely to step on a snake, if the path was clearer. It feels to me like it's a"	"Utilising the potential for utilising stormwater to irrigate the entire easement between Millers Road to Kororoit Creek Zone 9. Irrigation supports urban greening and cooling along this section of trail. https://www.wsaa.asn.au/publication/blue-green-liveability "		3015

	place we aren't meant to visit or be."		
<p>"The history of the sewer is interesting and the artifacts like the bridge/aqueduct need to be preserved.</p> <p>I feel like the industrial history is now accepted as part of the culture of Brooklyn so should be shed away from. e.g., graffiti and industrial art."</p>	<p>"The shift away from industry i.e., Finch Industries that detract from making this area along Kororoit Creek a nice visitor experience. Planting more trees along the creek to minimise the air quality issue in Brooklyn</p> <p>https://www.unep.org/news-and-stories/story/international-day-clean-air-blue-skies-underlines-link-between-healthy-air"</p>	<p>"Playground-ettes, places where parents and families can, whilst they are walking, stop and enjoy small playgrounds whilst walking with their children, I think the path needs regular attention and potentially even re-laying as it is cracked and a hazard to users"</p>	3029
"Connecting people and nature all the way from Brooklyn to Werribee"	"Access to the creek, safety lighting, picnic tables and BBQ facilities, improved bike paths"	"Lots and lots of trees. The eastern suburbs have parks that are full of trees"	3012
<p>"The historical references and information should be preserved, the area has very limited open space and so enhancing this area would be great. It could also become a habitat corridor for native birds"</p>	<p>"Unique access inside or through the sewer tunnels. We have all explored them as kids and makes the place pretty unique.</p> <p>Graffiti/art</p> <p>Better access to the nature through the trees. like the section leading to lower Kororoit creek reserve"</p>	"A decent bike paths. Water stations people and dogs"	3012